

# Vacuum switches

## Vacuum switch VS-V-EM-60-C



Vacuum switches VS-V-EM-60-C

### Our highlights...

- Electromechanical vacuum switch
- Switching point adjustable

### Your advantages...

- > Simple construction; precise operation
- > Can be adapted to meet customer requirements

### Applications

- Universal electromechanical vacuum switch for safety monitoring, optimization of cycle times and regulation circuits
- Special version for switching both DC (24 V) and AC (230 V) voltages

### Construction

- Electromechanical vacuum switch in robust aluminum housing
- Vacuum connector with G1/4" female thread
- Switching point adjustable with a screw
- Microswitch with gold-plated switch contacts
- Supply voltage and signal output via plug connector to DIN 43 650



### Suitability for branch-specific applications

### Designation code Vacuum switch VS-V-EM-60-C

Short designation	Measuring range	Principle of operation	Shape	Electrical connections
Example: VS	V	EM	60	C
VS	V...-900 to -100 mbar	EM...electromechanical	60...size 60	C...male connector DIN 43650

### Ordering data Vacuum switch VS-V-EM-60-C

Type	Article No.
VS-V-EM-60-C	10.06.01.00005

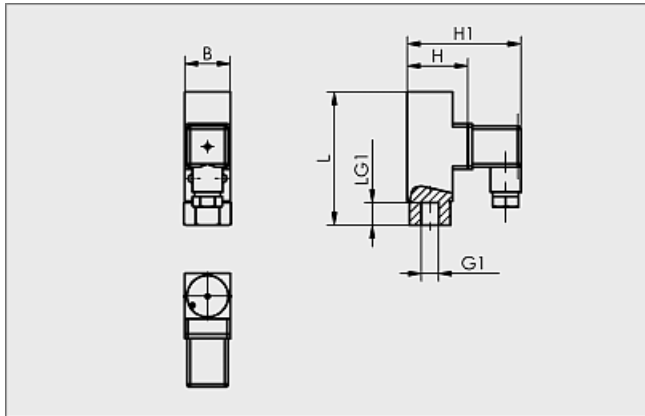
# Vacuum switches



## Vacuum switch VS-V-EM-60-C

### Technical data Vacuum switch VS-V-EM-60-C

Type	VS-V-EM-60-C
Measuring range	-900...-100 mbar
Max. overpressure resistance [bar]	25
Repeatability	40 mbar
Hysteresis	Fixed: 150 to 180 mbar
Switching capacity [A]	3
Switching element	Microswitch with gold-plated contacts
Switching frequency [Hz]	1,5
Electrical connection	Connector, DIN 43650
Measured medium connection	Thread G1/4-F
Voltage	max. 30V DC / 250V A
Protection IP	IP 65
Operating temperature [°C]	0...80 °C
Weight [g]	230



VS-V-EM-60-C

### Design data Vacuum switch VS-V-EM-60-C

Type	Dimensions in mm					
	B	G1	H	H1	L	LG1
VS-V-EM-60-C	30	G1/4-F	40	75	87,5	15,5